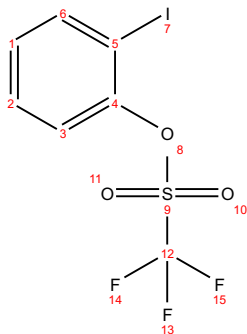
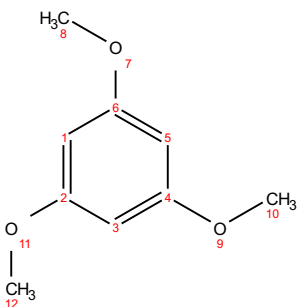


7.92
7.92
7.91
7.91
7.45
7.44
7.43
7.43
7.43
7.43
7.42
7.41
7.34
7.34
7.32
7.32
7.26 cdcl3
7.13
7.13
7.12
7.11
7.11
7.11
7.10
7.10

6.09 Int Standard

3.78 Int Standard

1.57 H2O



>99% from Millipore Sigma
23.9 mg added (0.142 mmol)

50.0 mg added (0.142 mmol)
99% purity calculated

