

12.55  
12.48

9.891  
9.685

7.649  
7.636  
7.534  
7.521  
7.492  
7.393  
7.380  
7.368  
7.293  
7.281  
7.269  
6.997  
6.983  
6.890  
6.877

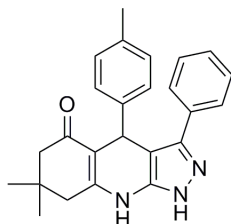
5.290

4.291

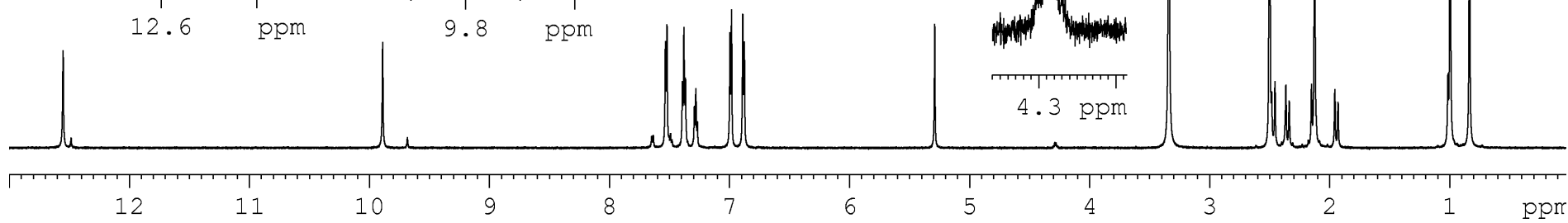
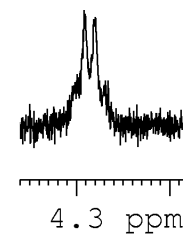
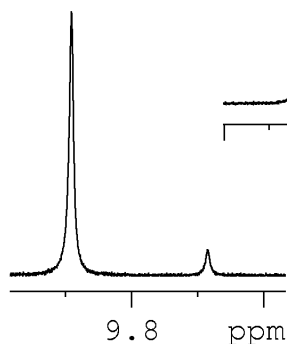
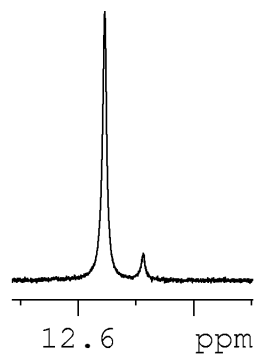
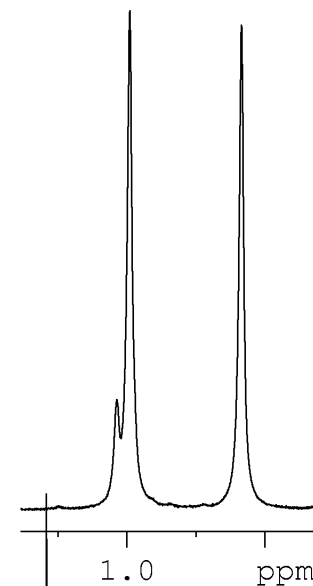
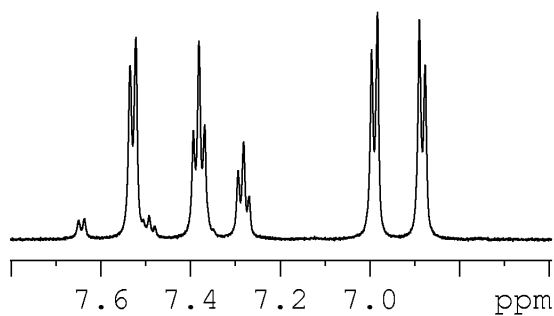
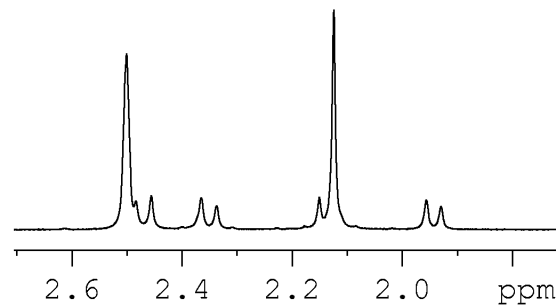
3.339

2.500  
2.483  
2.455  
2.365  
2.336  
2.151  
2.124  
1.956  
1.930

1.014  
0.995  
0.834



1 after trituration with DCM,  
but before recrystallization



1.000  
0.109

1.010  
0.097

0.241  
2.207  
2.088  
1.038  
2.005  
1.998

0.995

0.091

9.225

5.034  
1.294  
4.276  
1.040

4.025  
3.105