

mono-tosylate
WuXi separation
nmr400b c-13

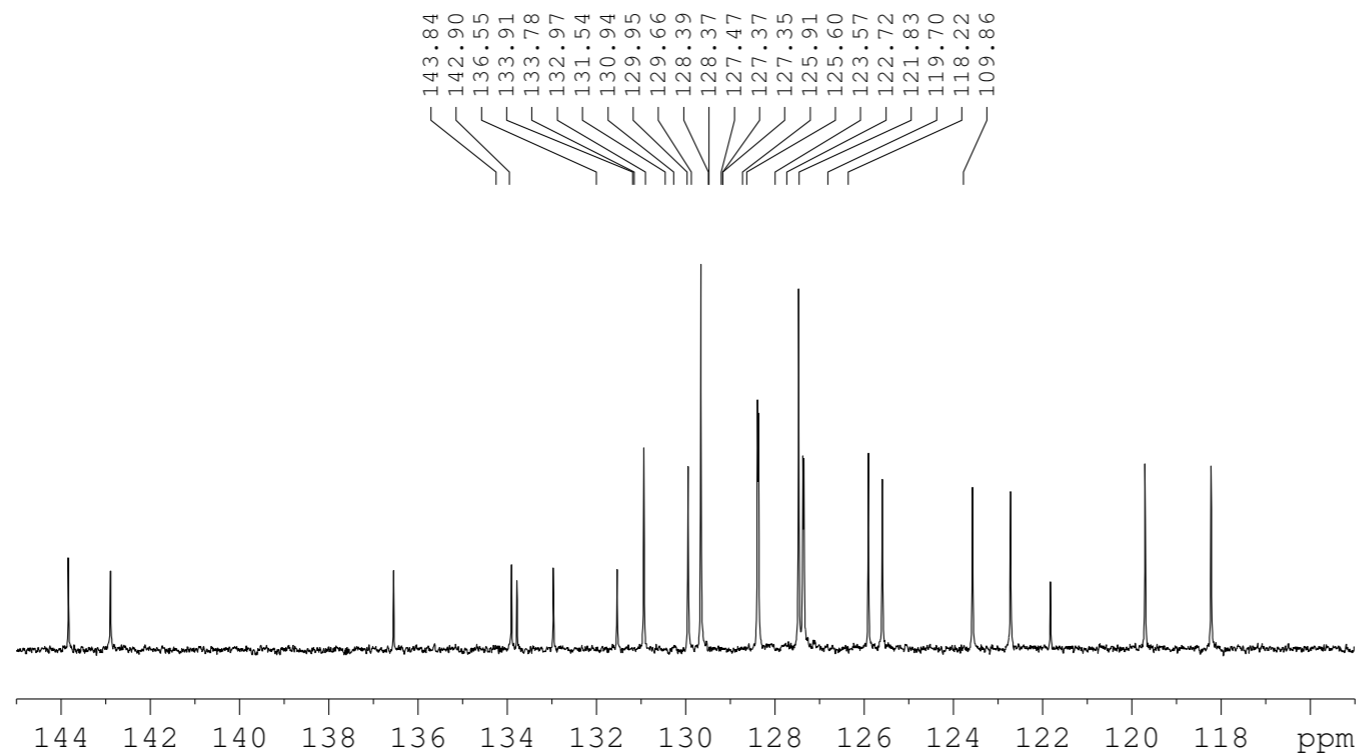
Current Data Parameters
NAME 32077-142
EXPNO 3
PROCNO 1

F2 - Acquisition Parameters
Date_ 20110115
Time 8.24
INSTRUM spect
PROBHD 5 mm QNP 1H/1
PULPROG zgdc
TD 65536
SOLVENT CDCl3
NS 8694
DS 4
SWH 26315.789 Hz
FIDRES 0.401547 Hz
AQ 1.2452340 sec
RG 8192
DW 19.000 usec
DE 7.00 usec
TE 300.0 K
D1 0.10000000 sec
d11 0.03000000 sec
TDO 40

==== CHANNEL f1 =====
NUC1 13C
P1 4.00 usec
PL1 0.00 dB
SFO1 100.5584512 MHz

==== CHANNEL f2 =====
CPDPRG2 waltz16
NUC2 1H
PCPD2 100.00 usec
PL2 120.00 dB
PL12 24.50 dB
SFO2 399.8719994 MHz

F2 - Processing parameters
SI 32768
SF 100.5473701 MHz
WDW EM
SSB 0
LB 1.00 Hz
GB 0
PC 1.40



Peak	?(F1) [ppm]	?(F1) [Hz]	Intensity
1	143.8413	14462.8644	1.32
2	142.8954	14367.7567	1.22
3	136.5498	13729.7233	1.14
4	133.9067	13463.9665	1.23
5	133.7841	13451.6394	1.02
6	132.9706	13369.8441	1.18
7	131.5401	13226.0111	1.17
8	130.9423	13165.9039	2.83
9	129.9503	13066.1609	2.62
10	129.6632	13037.2938	5.43
11	128.3936	12909.6388	3.50
12	128.3718	12907.4469	3.33
13	127.4698	12816.7532	5.13
14	127.3742	12807.1408	2.76
15	127.3513	12804.8383	2.81
16	125.9097	12659.8892	2.77
17	125.5958	12628.3274	2.52
18	123.5735	12424.9904	2.41
19	122.7197	12339.1431	2.39
20	121.8282	12249.5051	0.99
21	119.7032	12035.8420	2.63
22	118.2250	11887.2128	2.64
23	109.8580	11045.9330	0.91
24	77.5539	7797.8407	14.58
25	77.4378	7786.1671	0.89
26	77.2359	7765.8666	15.00
27	76.9179	7733.8926	14.69
28	21.7153	2183.4163	2.02

Pure

