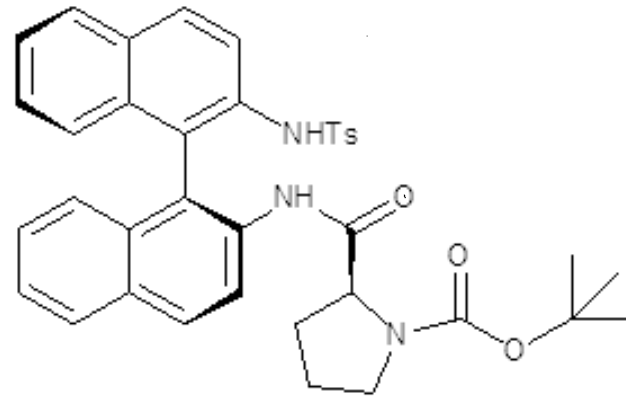


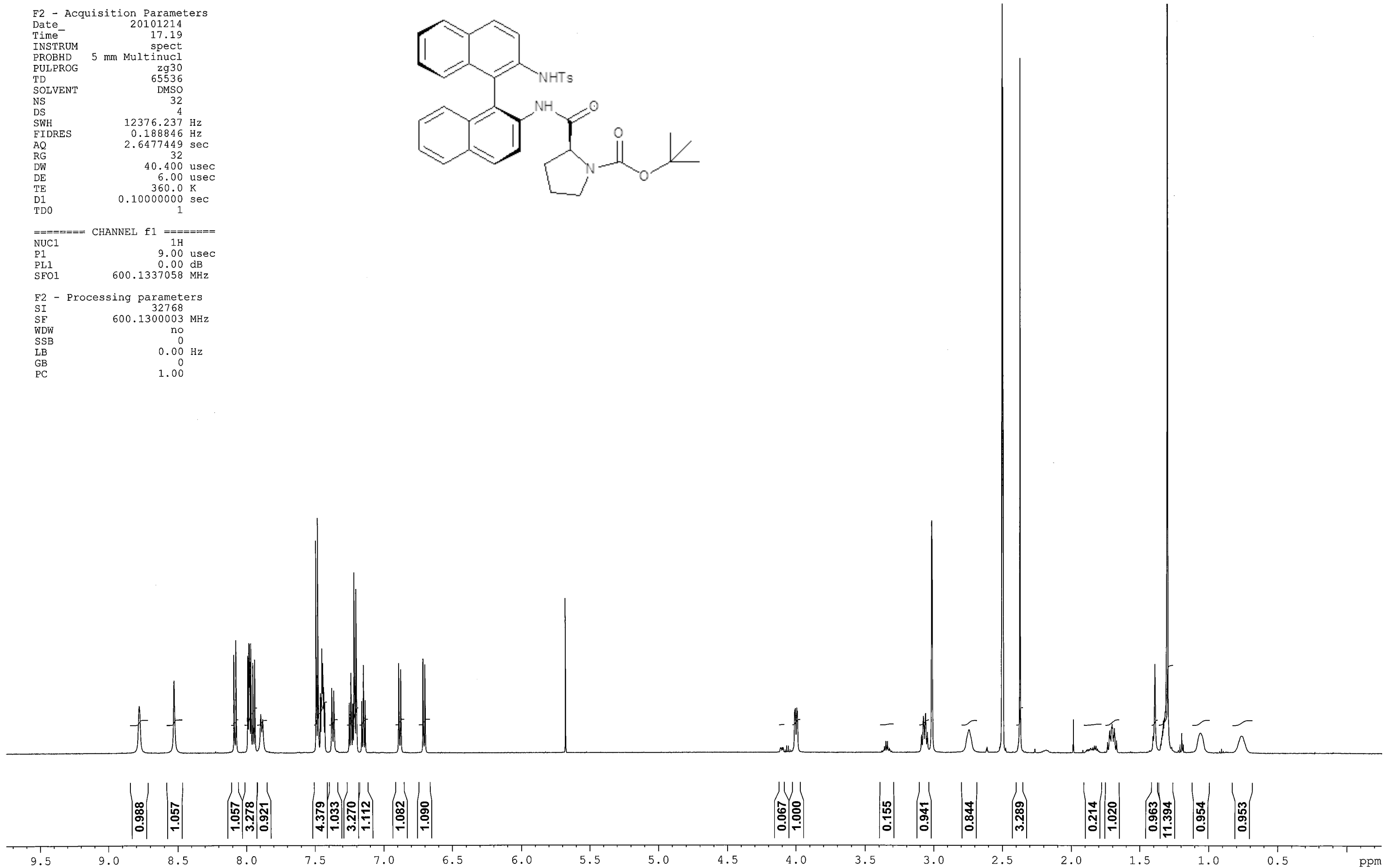
Current Data Parameters
NAME hugc0305445-0284
EXPNO 5
PROCNO 1

F2 - Acquisition Parameters
Date_ 20101214
Time_ 17.19
INSTRUM spect
PROBHD 5 mm Multinucl
PULPROG zg30
TD 65536
SOLVENT DMSO
NS 32
DS 4
SWH 12376.237 Hz
FIDRES 0.188846 Hz
AQ 2.6477449 sec
RG 32
DW 40.400 usec
DE 6.00 usec
TE 360.0 K
D1 0.10000000 sec
TD0 1

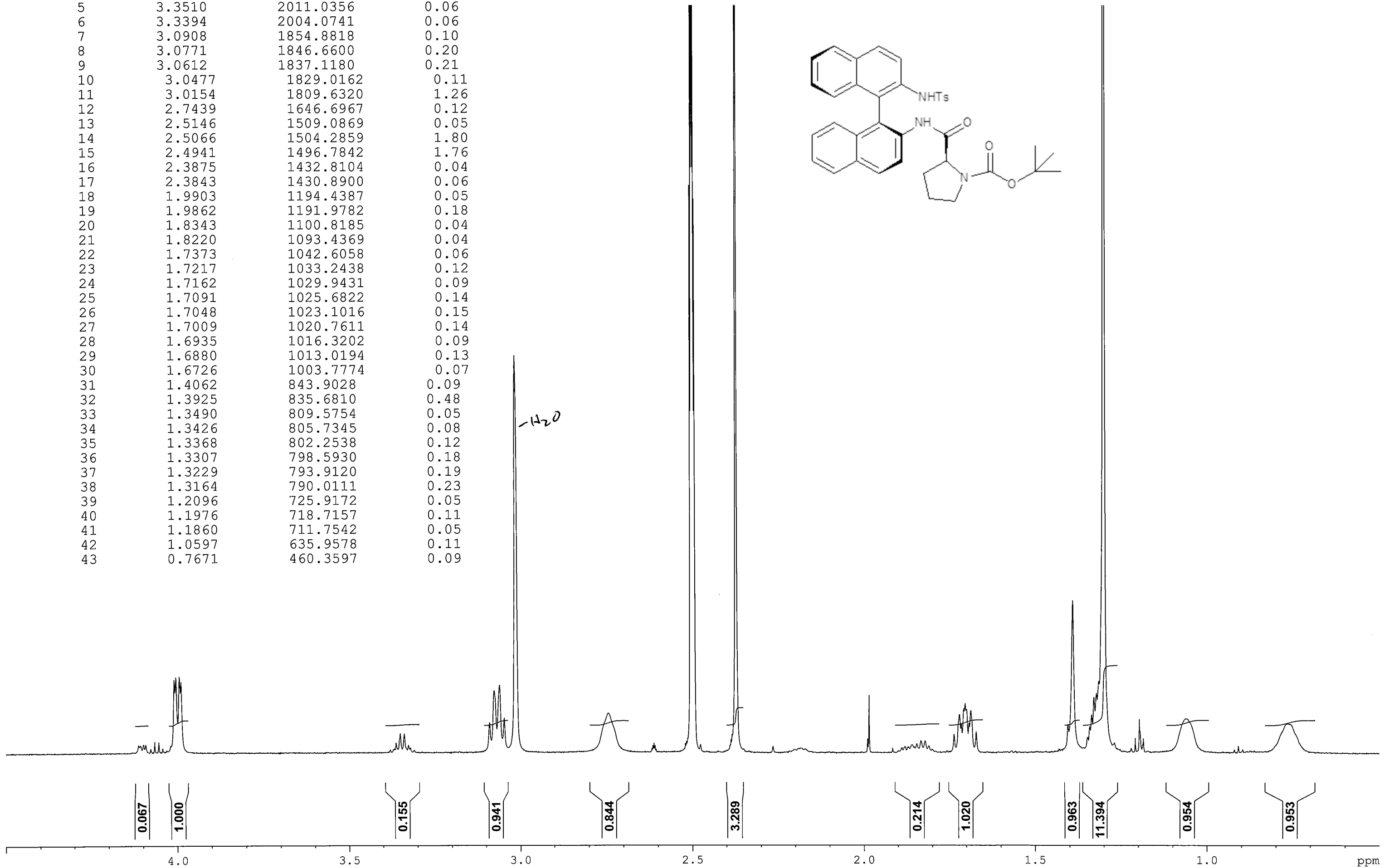
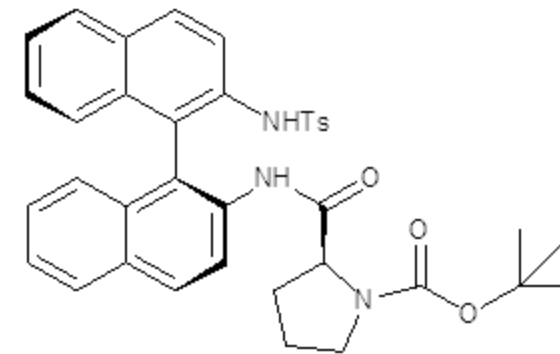


==== CHANNEL f1 =====
NUC1 1H
P1 9.00 usec
PL1 0.00 dB
SFO1 600.1337058 MHz

F2 - Processing parameters
SI 32768
SF 600.1300003 MHz
WDW no
SSB 0
LB 0.00 Hz
GB 0
PC 1.00



Peak	?(F1) [ppm]	?(F1) [Hz]	Intensity
1	4.0095	2406.2212	0.23
2	4.0045	2403.2206	0.24
3	3.9946	2397.2793	0.24
4	3.9896	2394.2786	0.23
5	3.3510	2011.0356	0.06
6	3.3394	2004.0741	0.06
7	3.0908	1854.8818	0.10
8	3.0771	1846.6600	0.20
9	3.0612	1837.1180	0.21
10	3.0477	1829.0162	0.11
11	3.0154	1809.6320	1.26
12	2.7439	1646.6967	0.12
13	2.5146	1509.0869	0.05
14	2.5066	1504.2859	1.80
15	2.4941	1496.7842	1.76
16	2.3875	1432.8104	0.04
17	2.3843	1430.8900	0.06
18	1.9903	1194.4387	0.05
19	1.9862	1191.9782	0.18
20	1.8343	1100.8185	0.04
21	1.8220	1093.4369	0.04
22	1.7373	1042.6058	0.06
23	1.7217	1033.2438	0.12
24	1.7162	1029.9431	0.09
25	1.7091	1025.6822	0.14
26	1.7048	1023.1016	0.15
27	1.7009	1020.7611	0.14
28	1.6935	1016.3202	0.09
29	1.6880	1013.0194	0.13
30	1.6726	1003.7774	0.07
31	1.4062	843.9028	0.09
32	1.3925	835.6810	0.48
33	1.3490	809.5754	0.05
34	1.3426	805.7345	0.08
35	1.3368	802.2538	0.12
36	1.3307	798.5930	0.18
37	1.3229	793.9120	0.19
38	1.3164	790.0111	0.23
39	1.2096	725.9172	0.05
40	1.1976	718.7157	0.11
41	1.1860	711.7542	0.05
42	1.0597	635.9578	0.11
43	0.7671	460.3597	0.09



Peak	?(F1) [ppm]	?(F1) [Hz]	Intensity
1	12.1509	7292.1196	0.00
2	12.0740	7245.9696	0.00
3	12.0514	7232.4067	0.01
4	11.9846	7192.3180	0.00
5	8.9008	5341.6371	0.00
6	8.8310	5299.7480	0.00
7	8.7763	5266.9209	0.25
8	8.6937	5217.3502	0.00
9	8.6899	5215.0697	0.00
10	8.5244	5115.7482	0.39
11	8.2212	4933.7888	0.01
12	8.1192	4872.5755	0.01
13	8.0871	4853.3113	0.53
14	8.0724	4844.4894	0.61
15	8.0269	4817.1835	0.01
16	7.9880	4793.8384	0.53
17	7.9797	4788.8574	0.60
18	7.9746	4785.7967	0.59
19	7.9649	4779.9754	0.59
20	7.9506	4771.3936	0.49
21	7.9370	4763.2318	0.51
22	7.8931	4736.8861	0.21
23	7.8788	4728.3042	0.18
24	7.8547	4713.8411	0.01
25	7.8418	4706.0994	0.01
26	7.8284	4698.0577	0.01
27	7.8032	4682.9344	0.00
28	7.6237	4575.2111	0.00
29	7.6125	4568.4896	0.00
30	7.5803	4549.1654	0.00
31	7.5629	4538.7232	0.00
32	7.5307	4519.3990	0.00
33	7.4898	4494.8537	1.15
34	7.4760	4486.5719	1.27
35	7.4607	4477.3899	0.30
36	7.4591	4476.4297	0.32

Current Data Parameters
 NAME hugc0305445-0284
 EXPNO 5
 PROCNO 1
 F2 - Acquisition Parameters
 Date_ 20101214
 Time 17.19
 INSTRUM spect
 PROBHD 5 mm Multinucl
 PULPROG zg30
 TD 65536
 SOLVENT DMSO
 NS 32
 DS 4
 SWH 12376.237 Hz
 FIDRES 0.188846 Hz
 AQ 2.6477449 sec
 RG 32
 DW 40.400 usec
 DE 6.00 usec
 TE 360.0 K
 D1 0.10000000 sec
 TD0 1
 ===== CHANNEL f1 =====
 NUC1 1H
 P1 9.00 usec
 PL1 0.00 dB
 SFO1 600.1337058 MHz
 F2 - Processing parameters
 SI 32768
 SF 600.1300003 MHz
 WDW no
 SSB 0
 LB 0.00 Hz
 GB 0
 PC 1.00

Peak	?(F1) [ppm]	?(F1) [Hz]	Intensity
37	7.4526	4472.5288	0.30
38	7.4494	4470.6084	0.41
39	7.4475	4469.4682	0.57
40	7.4454	4468.2079	0.41
41	7.4409	4465.5073	0.49
42	7.4358	4462.4467	0.36
43	7.4341	4461.4264	0.34
44	7.4291	4458.4258	0.28
45	7.4277	4457.5856	0.27
46	7.3775	4427.4591	0.35
47	7.3626	4418.5171	0.34
48	7.3388	4404.2340	0.01
49	7.3350	4401.9536	0.01
50	7.2935	4377.0482	0.00
51	7.2524	4352.3828	0.26
52	7.2507	4351.3626	0.27
53	7.2410	4345.5413	0.28
54	7.2387	4344.1610	0.43
55	7.2365	4342.8407	0.32
56	7.2268	4337.0195	0.26
57	7.2251	4335.9993	0.27
58	7.2142	4329.4578	0.97
59	7.2008	4321.4161	0.89
60	7.1623	4298.3111	0.28
61	7.1604	4297.1709	0.28
62	7.1510	4291.5296	0.30
63	7.1486	4290.0893	0.47
64	7.1463	4288.7090	0.34
65	7.1368	4283.0078	0.28
66	7.1350	4281.9276	0.28
67	7.0783	4247.9002	0.00
68	6.8884	4133.9355	0.49
69	6.8742	4125.4136	0.45
70	6.8429	4106.6296	0.00
71	6.7378	4043.5559	0.00
72	6.7118	4027.9525	0.51
73	6.6977	4019.4907	0.48

