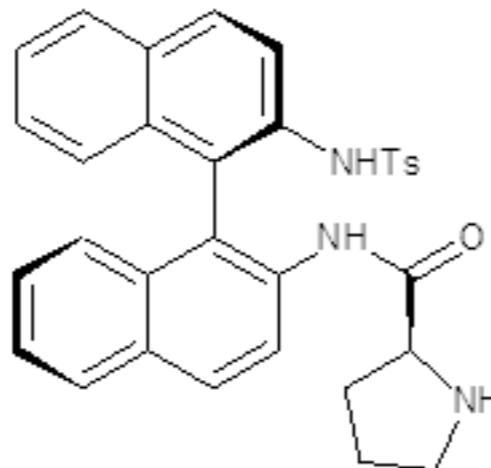


(R_a,S)-diastereomer



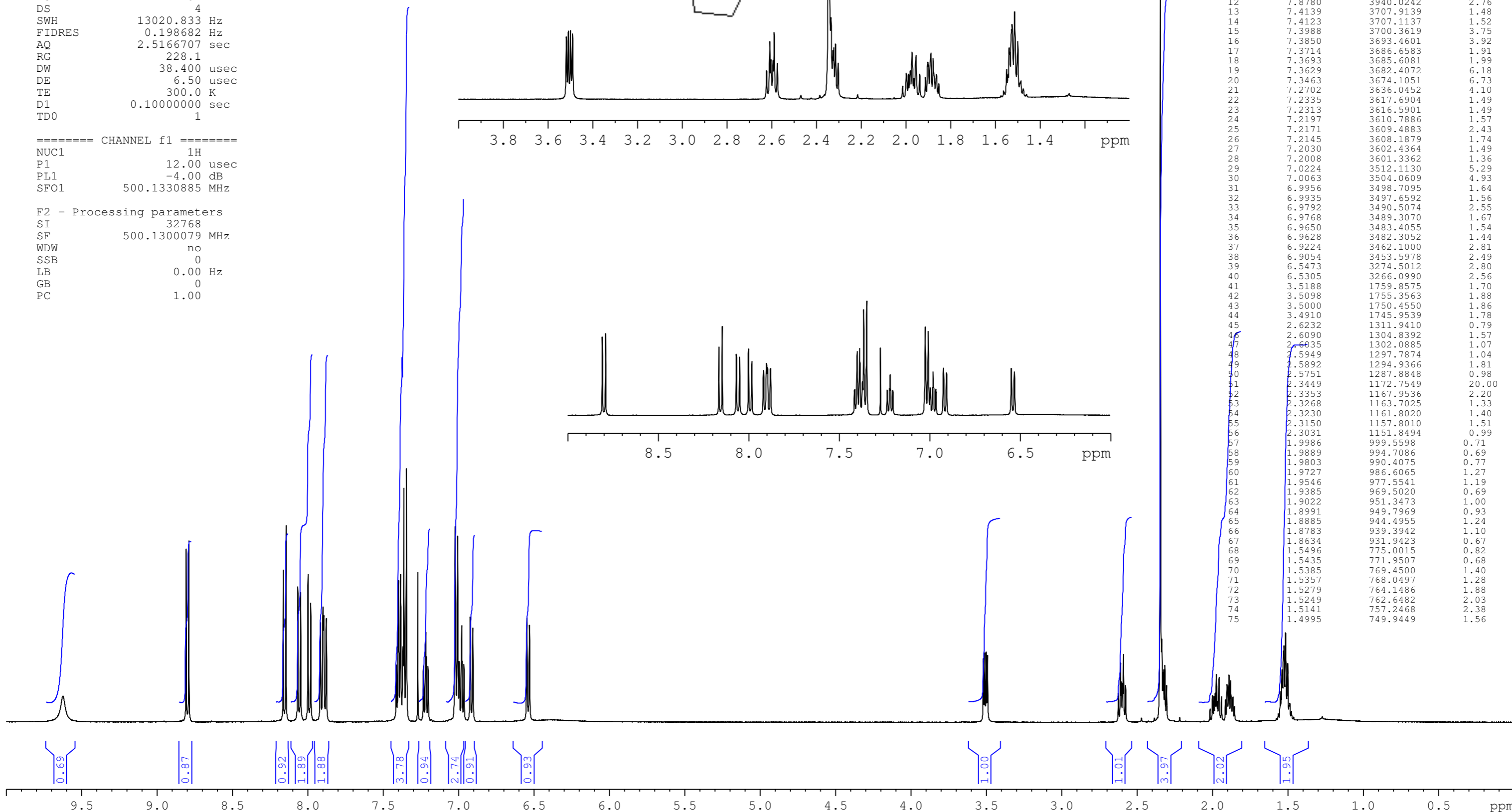
32077-135
recrystallized R-Binam-Ts-L-pro
nmr500c h-1

Current Data Parameters
NAME 32077-135
EXPNO 6
PROCNO 1

F2 - Acquisition Parameters
Date_ 20101126
Time 12.24
INSTRUM spect
PROBHD 5 mm QNP 1H/13
PULPROG zg30
TD 65536
SOLVENT CDC13
NS 32
DS 4
SWH 13020.833 Hz
FIDRES 0.198682 Hz
AQ 2.5166707 sec
RG 228.1
DW 38.400 usec
DE 6.50 usec
TE 300.0 K
D1 0.10000000 sec
TD0 1

==== CHANNEL f1 =====
NUC1 1H
P1 12.00 usec
PL1 -4.00 dB
SFO1 500.1330885 MHz

F2 - Processing parameters
SI 32768
SF 500.1300079 MHz
WDW no
SSB 0
LB 0.00 Hz
GB 0
PC 1.00



Peak	?(F1) [ppm]	?(F1) [Hz]	Int
1	8.8073	4404.7950	4.58
2	8.7892	4395.7427	4.85
3	8.1626	4082.3612	4.19
4	8.1445	4073.3088	5.28
5	8.0667	4034.3987	3.59
6	8.0486	4025.3464	3.42
7	7.9993	4000.6900	3.90
8	7.9812	3991.6376	3.16
9	7.9166	3959.3292	2.63
10	7.9001	3951.0771	3.04
11	7.8946	3948.3264	2.82
12	7.8780	3940.0242	2.76
13	7.4139	3707.9139	1.48
14	7.4123	3707.1137	1.52
15	7.3988	3700.3619	3.75
16	7.3850	3693.4601	3.92
17	7.3714	3686.6583	1.91
18	7.3693	3685.6081	1.99
19	7.3629	3682.4072	6.18
20	7.3463	3674.1051	6.73
21	7.2702	3636.0452	4.10
22	7.2335	3617.6904	1.49
23	7.2313	3616.5901	1.49
24	7.2197	3610.7886	1.57
25	7.2171	3609.4883	2.43
26	7.2145	3608.1879	1.74
27	7.2030	3602.4364	1.49
28	7.2008	3601.3362	1.36
29	7.0224	3512.1130	5.29
30	7.0063	3504.0609	4.93
31	6.9956	3498.7095	1.64
32	6.9935	3497.6592	1.56
33	6.9792	3490.5074	2.55
34	6.9768	3489.3070	1.67
35	6.9650	3483.4055	1.54
36	6.9628	3482.3052	1.44
37	6.9224	3462.1000	2.81
38	6.9054	3453.5978	2.49
39	6.5473	3274.5012	2.80
40	6.5305	3266.0990	2.56
41	3.5188	1759.8575	1.70
42	3.5098	1755.3563	1.88
43	3.5000	1750.4550	1.86
44	3.4910	1745.9539	1.78
45	2.6232	1311.9410	0.79
46	2.6090	1304.8392	1.57
47	2.6035	1302.0885	1.07
48	2.5949	1297.7874	1.04
49	2.5892	1294.9366	1.81
50	2.5751	1287.8848	0.98
51	2.3449	1172.7549	20.00
52	2.3353	1167.9536	2.20
53	2.3268	1163.7025	1.33
54	2.3230	1161.8020	1.40
55	2.3150	1157.8010	1.51
56	2.3031	1151.8494	0.99
57	1.9986	999.5598	0.71
58	1.9889	994.7086	0.69
59	1.9803	990.4075	0.77
60	1.9727	986.6065	1.27
61	1.9546	977.5541	1.19
62	1.9385	969.5020	0.69
63	1.9022	951.3473	1.00
64	1.8991	949.7969	0.93
65	1.8885	944.4955	1.24
66	1.8783	939.3942	1.10
67	1.8634	931.9423	0.67
68	1.5496	775.0015	0.82
69	1.5435	771.9507	0.68
70	1.5385	769.4500	1.40
71	1.5357	768.0497	1.28
72	1.5279	764.1486	1.88
73	1.5249	762.6482	2.03
74	1.5141	757.2468	2.38
75	1.4995	749.9449	1.56