

32077-142
S-Binam-tosylate
nmr400b h-1

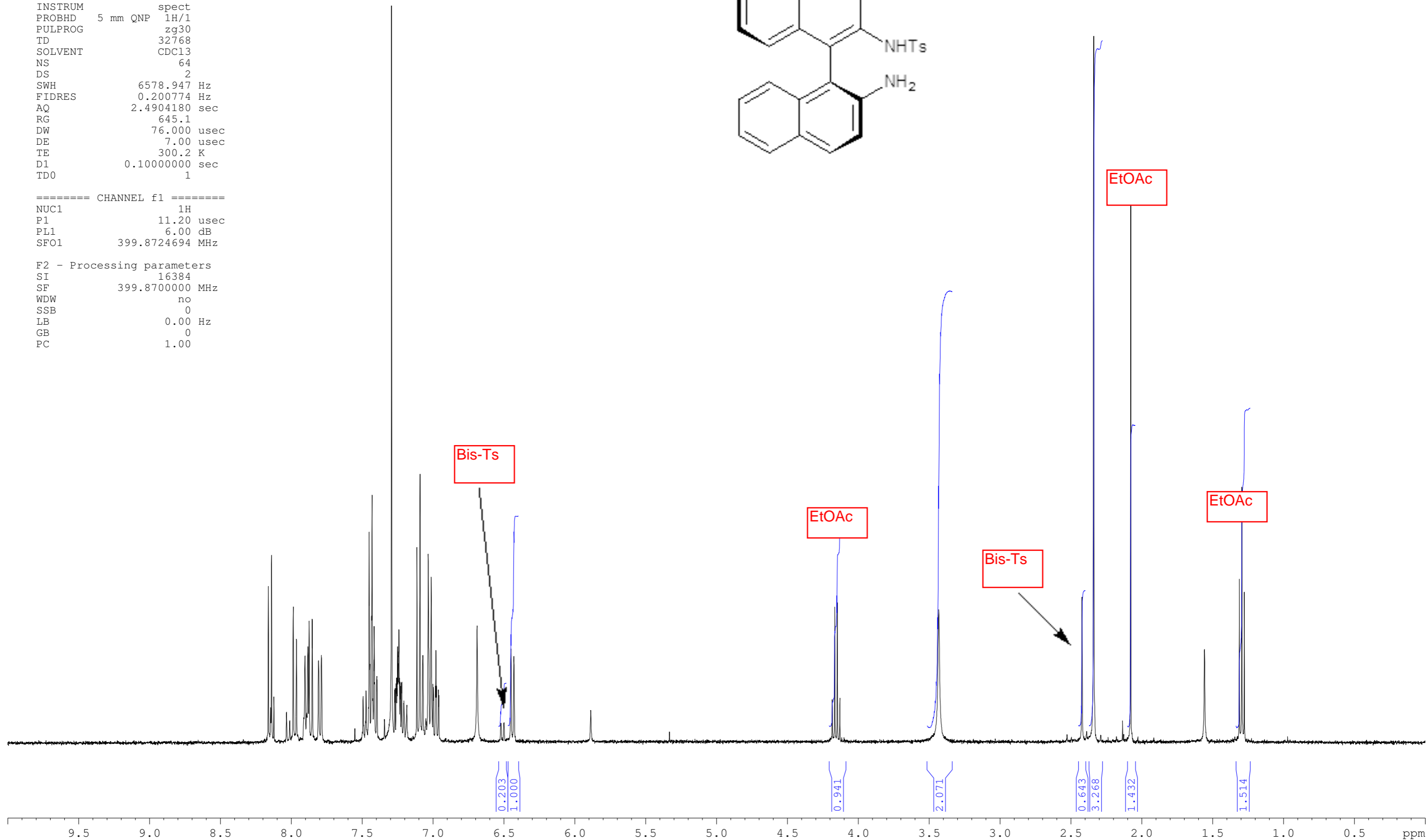
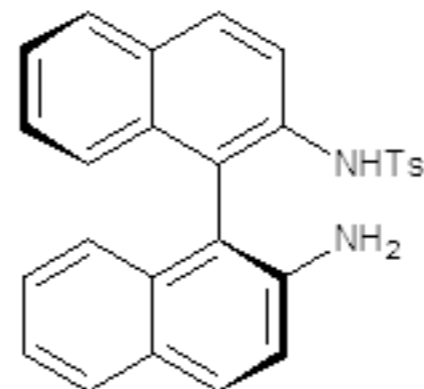
Current Data Parameters
NAME 32077-142
EXPNO 1
PROCNO 1

F2 - Acquisition Parameters
Date_ 20110111
Time 7.16
INSTRUM spect
PROBHD 5 mm QNP 1H/1
PULPROG zg30
TD 32768
SOLVENT CDCl3
NS 64
DS 2
SWH 6578.947 Hz
FIDRES 0.200774 Hz
AQ 2.4904180 sec
RG 645.1
DW 76.000 usec
DE 7.00 usec
TE 300.2 K
D1 0.10000000 sec
TD0 1

==== CHANNEL f1 =====
NUC1 1H
P1 11.20 usec
PL1 6.00 dB
SFO1 399.8724694 MHz

F2 - Processing parameters
SI 16384
SF 399.8700000 MHz
WDW no
SSB 0
LB 0.00 Hz
GB 0
PC 1.00

Crude



Current Data Parameters
 NAME 32077-142
 EXPNO 2
 PROCNO 1

F2 - Acquisition Parameters
 Date_ 20110115
 Time 8.14
 INSTRUM spect
 PROBHD 5 mm QNP 1H/1
 PULPROG zg30
 TD 32768
 SOLVENT CDC13
 NS 32
 DS 2
 SWH 6578.947 Hz
 FIDRES 0.200774 Hz
 AQ 2.4904180 sec
 RG 362
 DW 76.000 usec
 DE 7.00 usec
 TE 299.8 K
 D1 0.10000000 sec
 TD0 1

==== CHANNEL f1 =====
 NUC1 1H
 P1 11.20 usec
 PL1 6.00 dB
 SFO1 399.8724694 MHz

F2 - Processing parameters
 SI 16384
 SF 399.8700087 MHz
 WDW no
 SSB 0
 LB 0.00 Hz
 GB 0
 PC 1.00

Peak	?(F1) [ppm]	?(F1) [Hz]	Intensity
1	8.1430	3256.1415	4.27
2	8.1204	3247.1044	5.35
3	7.9667	3185.6444	3.86
4	7.9441	3176.6073	3.02
5	7.8833	3152.2952	2.51
6	7.8632	3144.2579	2.77
7	7.8526	3140.0192	3.52
8	7.8307	3131.2621	3.65
9	7.7869	3113.7478	2.42
10	7.7668	3105.7104	2.57
11	7.4306	2971.2741	6.15
12	7.4137	2964.5163	3.64
13	7.4100	2963.0368	7.50
14	7.3967	2957.7185	1.97
15	7.3939	2956.5989	2.77
16	7.3912	2955.5192	1.47
17	7.3764	2949.6011	1.58
18	7.3738	2948.5615	1.52
19	7.2705	2907.2549	6.65
20	7.2488	2898.5777	1.52
21	7.2458	2897.3781	1.52
22	7.2398	2894.9789	1.64
23	7.2374	2894.0192	1.68
24	7.2317	2891.7399	1.51
25	7.2280	2890.2604	2.72
26	7.2238	2888.5810	3.03
27	7.2200	2887.0615	3.06
28	7.2104	2883.2227	1.68
29	7.2075	2882.0631	1.63
30	7.2023	2879.9838	1.64
31	7.2001	2879.1040	1.56
32	7.0920	2835.8781	5.23
33	7.0704	2827.2409	6.28
34	7.0525	2820.0832	2.22
35	7.0129	2804.2484	5.29
36	6.9923	2796.0111	4.78
37	6.9794	2790.8527	1.57
38	6.9764	2789.6531	1.55
39	6.9621	2783.9350	1.51
40	6.9588	2782.6154	2.59
41	6.9553	2781.2159	1.69
42	6.9411	2775.5377	1.45
43	6.9382	2774.3781	1.38
44	6.6735	2668.5325	3.40
45	6.4304	2571.3241	2.68
46	6.4094	2562.9268	2.46
47	3.2913	1316.0922	2.38
48	2.3171	926.5388	20.00

Pure

mono-tosylate
 WuXi separation
 nmr400b h-1

