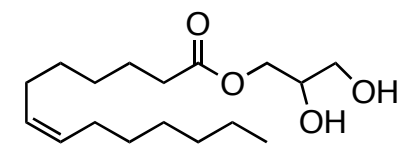


```

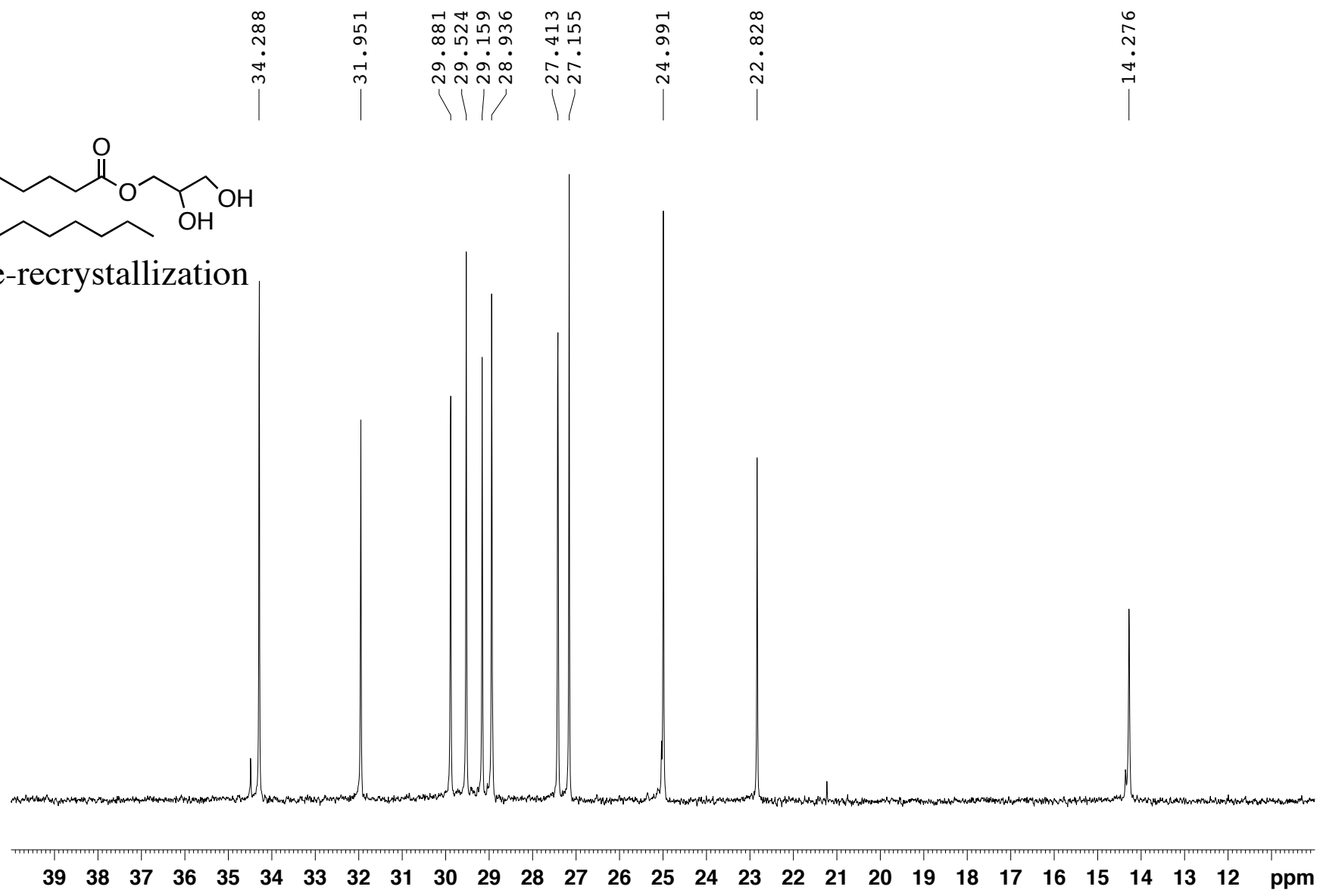
NAME          z1.203b
EXPNO         1
PROCNO        1
Date_         20100502
Time_         16.24
INSTRUM       spect
PROBHD        5 mm QNP 1H
PULPROG       zgdc
TD            112780
SOLVENT       CDCl3
NS            352
DS            0
SWH           34013.605 Hz
FIDRES        0.301593 Hz
AQ            1.6579159 sec
RG            16384
DW            14.700 usec
DE            7.50 usec
TE            300.0 K
D1            1.00000000 sec
d11           0.03000000 sec

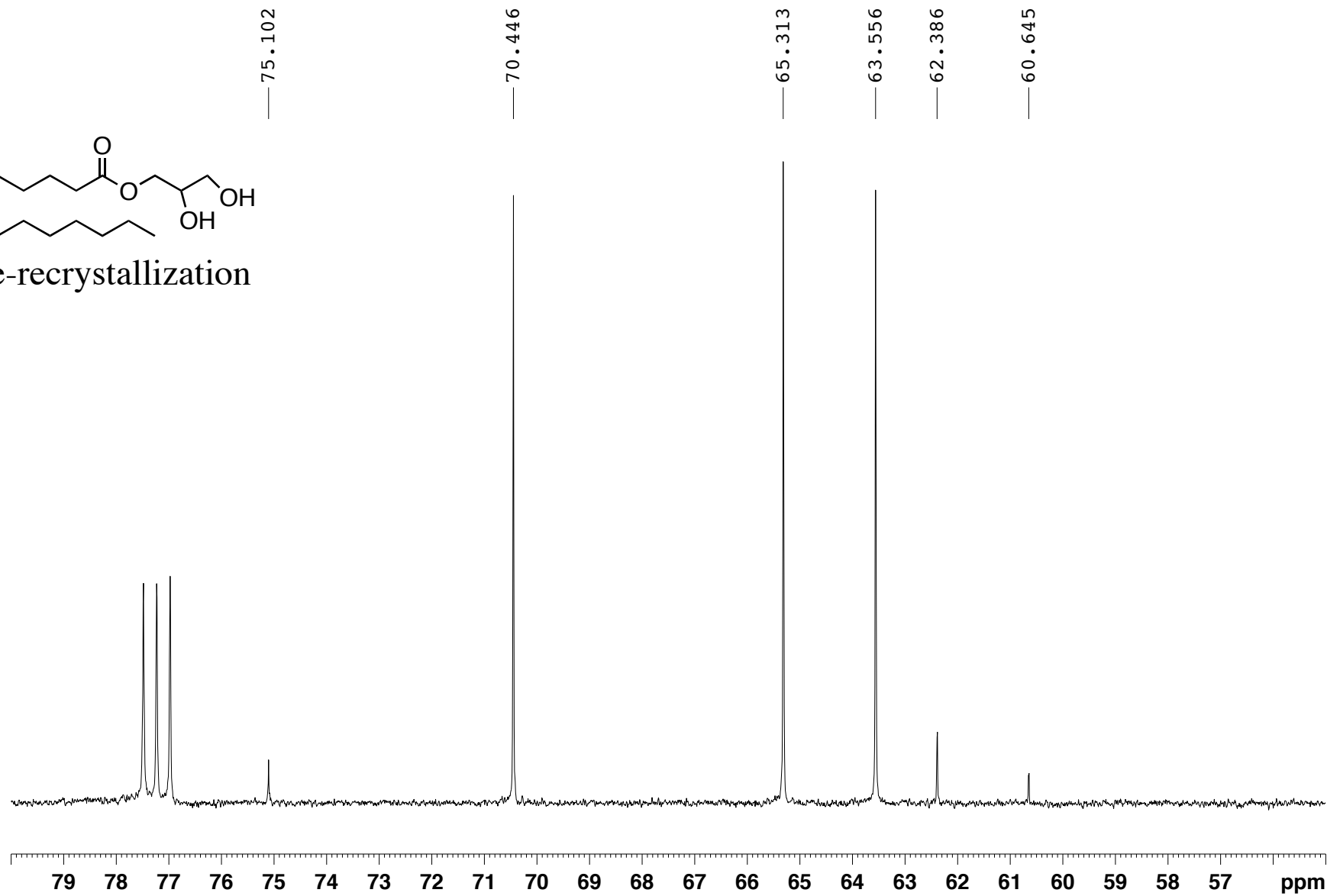
===== CHANNEL f1 =====
NUC1          13C
P1            8.00 usec
PL1           3.00 dB
SFO1          125.7709436 MHz

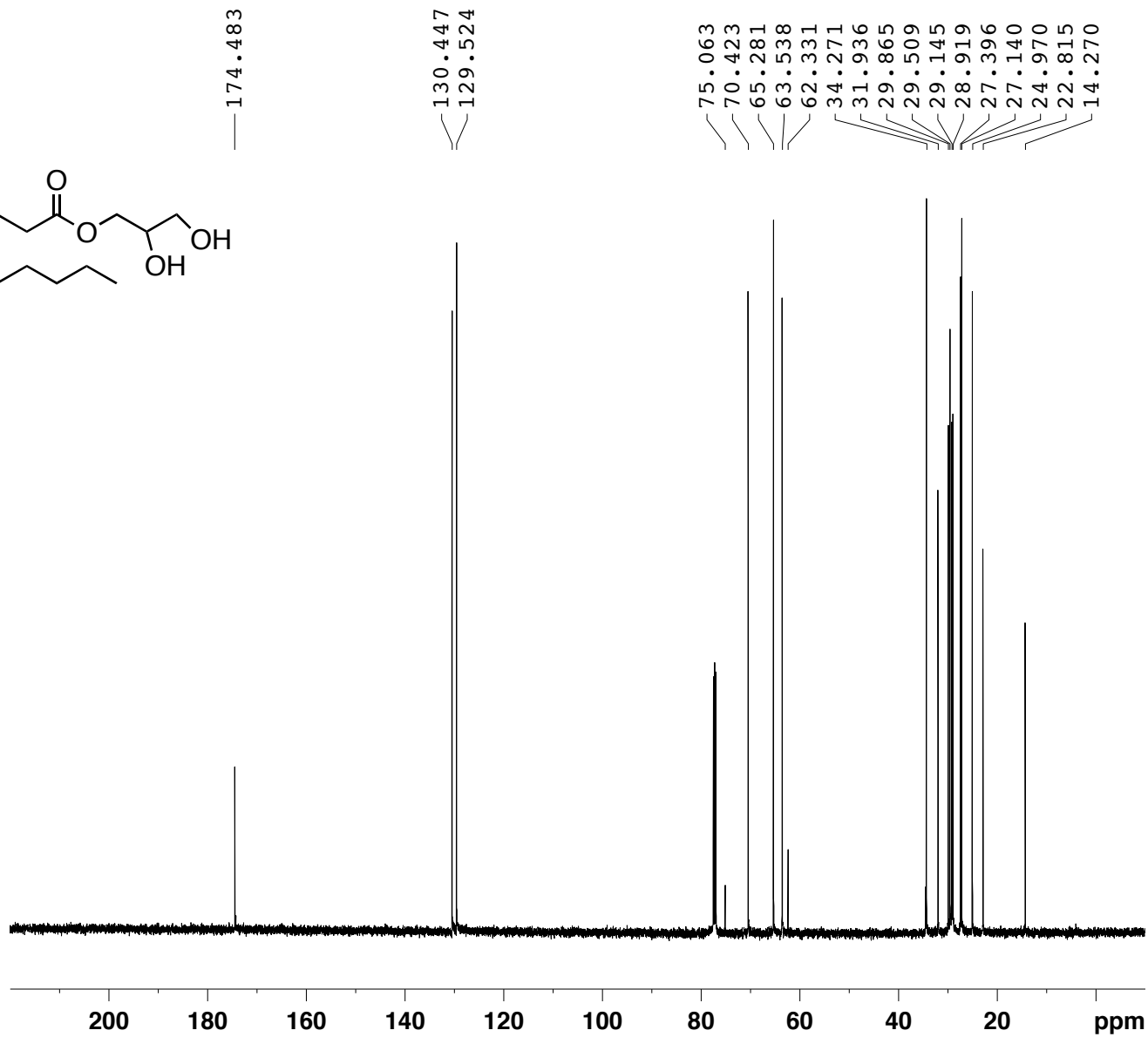
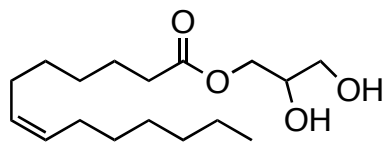
===== CHANNEL f2 =====
CPDPRG2       waltz16
NUC2          1H
PCPD2         90.00 usec
PL2           120.00 dB
PL12          20.00 dB
SFO2          500.1338000 MHz
SI            32768
SF            125.7577657 MHz
WDW           EM
SSB           0
LB            1.00 Hz
GB            0
PC            1.40
  
```



pre-recrystallization







```

NAME          z2.76f
EXPNO         1
PROCNO        1
Date_         20110114
Time_        16.39
INSTRUM       spect
PROBHD        5 mm QNP 1H
PULPROG       zgdc
TD            112780
SOLVENT       CDCl3
NS            371
DS            0
SWH           34013.605 Hz
FIDRES        0.301593 Hz
AQ            1.6579159 sec
RG            16384
DW            14.700 usec
DE            7.50 usec
TE            300.0 K
D1            1.0000000 sec
d11           0.0300000 sec
  
```

```

===== CHANNEL f1 =====
NUC1           13C
P1             8.00 usec
PL1            3.00 dB
SFO1          125.7709436 MHz

===== CHANNEL f2 =====
CPDPRG2       waltz16
NUC2           1H
PCPD2         90.00 usec
PL2           120.00 dB
PL12          20.00 dB
SFO2          500.1338000 MHz
SI            32768
SF            125.7577686 MHz
WDW           EM
SSB           0
LB            1.00 Hz
GB            0
PC            1.40
  
```

