

# Crude 1,1-difluoro-2-iodo-5-phenylpent-1-en-3-yl acetate, 1H NMR

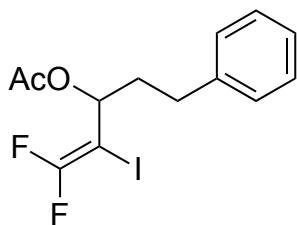


7.6253  
7.6125  
7.5519  
7.5394  
7.5272  
7.4850  
7.4723  
7.4596  
7.3012  
7.2888  
7.2762  
7.2456  
7.2132  
7.2010  
7.1890  
7.1758  
7.1636

4.9895  
4.9777  
4.9693  
4.9660

4.1333  
4.1214  
4.1095  
4.0976

2.5982  
2.5945  
2.5829  
2.5719  
2.5681  
2.0925  
2.0812  
2.0612  
2.0463  
2.0437  
2.0340  
1.9984  
1.9221  
1.9098  
1.8956  
1.8869  
1.8839  
1.8724  
1.6417  
1.3710  
1.3601  
1.2630  
1.2511  
1.2392  
1.2016  
1.1905  
-0.0002



Current Data Parameters  
NAME SS2-743-cr  
EXPNO 20  
PROCNO 1

F2 - Acquisition Parameters  
Date\_ 20160328  
Time 20.38  
INSTRUM spect  
PROBHD 5 mm CPPBBO BB  
PULPROG zg30  
TD 65536  
SOLVENT CDCl3  
NS 16  
DS 2  
SWH 12019.230 Hz  
FIDRES 0.183399 Hz  
AQ 2.7262976 sec  
RG 15.79  
DW 41.600 usec  
DE 10.00 usec  
TE 300.0 K  
D1 1.00000000 sec  
TD0 1

==== CHANNEL f1 =====  
SFO1 600.1337060 MHz  
NUC1 1H  
P1 12.00 usec  
PLW1 23.00000000 W

F2 - Processing parameters  
SI 65536  
SF 600.1300244 MHz  
WDW EM  
SSB 0  
LB 0.30 Hz  
GB 0  
PC 1.00

(Internal Standard)

